



Our County

# Equity and Resilience: An 'Our County' Workshop

October 26, 2018

# The Team

# Consultant Team



Topic and data collection and analysis leadership and stakeholder engagement co-leadership



Stakeholder engagement  
co-leadership



Topic expert: **open space**



Topic expert: **housing and economy  
and workforce development**  
SE support



Advisors



Topic expert: **health and  
wellbeing**



Topic expert:  
**transportation**



Topic expert: **air quality**



# Los Angeles County Chief Sustainability Office

A wide-angle landscape photograph showing a green field in the foreground, a solar farm in the middle ground, a wind farm in the distance, and a range of blue mountains under a clear sky.

The Chief Sustainability Office provides comprehensive and coordinated policy support and guidance for the Board of Supervisors, County departments, the unincorporated areas, and the region to make our communities healthier, more liveable, economically stronger, more equitable, more resilient, and more sustainable.

# The Plan

# The County's Aims



The plan should be:

- Aspirational, Comprehensive, Long-Term, Regional, Actionable

The task:

- Develop a comprehensive framework for County and City sustainability initiatives
- Serve as template for local cities when preparing sustainability/climate action plans
- Prepare the region to be competitive for funding

# The County's Sphere of Influence



# Countywide Sustainability Plan Framework

- Water
- Energy
- Climate
- Air Quality
- Land Use and Transportation
- Open Space, Recreation and Habitat/Biodiversity
- Resource Recovery and Waste Management
- Public Health and Well-Being
- Economy and Workforce Development
- Housing

**Equity &  
Resilience  
woven  
throughout**



# Organizing Principles



**Nurturing Healthy Communities**



**Cultivating a Just Economy**



**Fostering a Healthy Relationship with the Environment**



**Making It Happen**

# Stakeholder Process and Today's Agenda

# Stakeholder Engagement Equity Statement



## Equity

### Goal

Reduce disparities across geographies due to race, class, gender, and other social differences

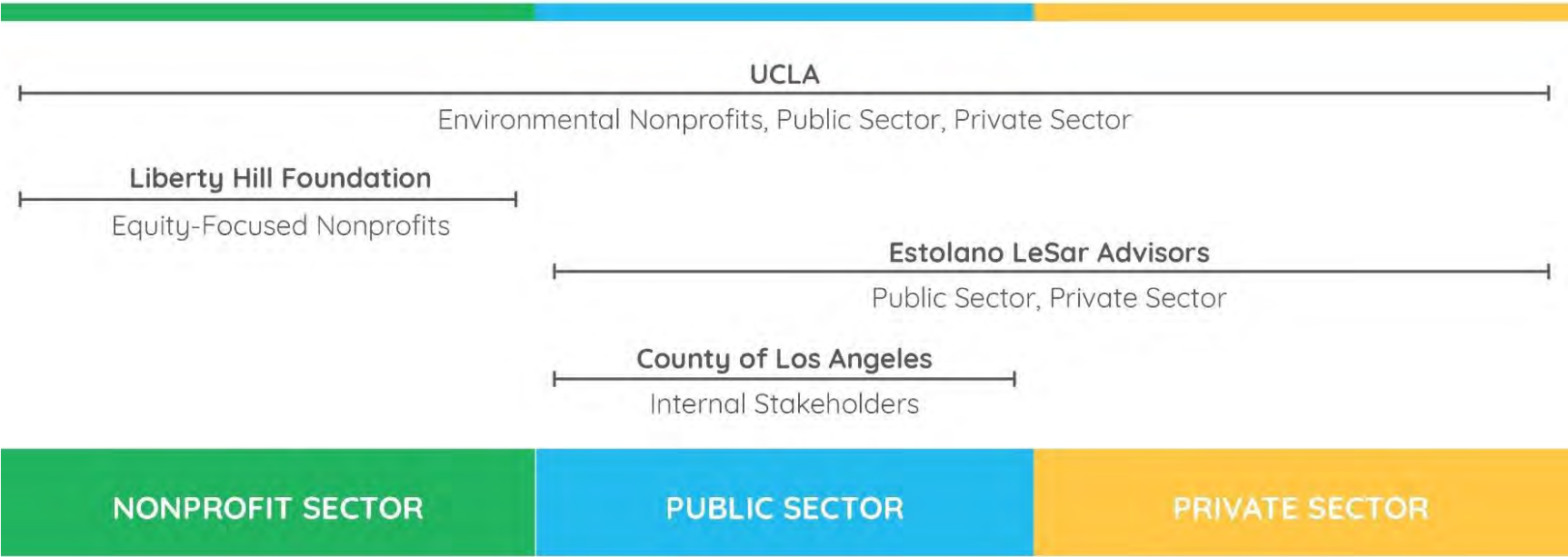
### Strategy

Commit resources to include those often left out of policy and planning discussions

### Indicators

<b>Distributional</b>	Actions that repair current and historical imbalances
<b>Procedural</b>	Participatory decisionmaking with vulnerable communities
<b>Transformational</b>	Strategies securing future benefits for at-risk populations

# Stakeholder Engagement Plan



# Stakeholder Engagement Timeline



# Nonprofit Workshop Takeaway Themes

## 5 Workshops (June-September 2018)



### Example Breakout (Energy Workshop)



### Comments received related to:

1. Public Health and Air Quality
2. Economy and Workforce Development
3. Housing
4. Land Use
5. Governance



# Today's Team Leaders



## Breakout Group Facilitators

- Sabrina Bornstein, LA Mayor's Office of Resilience
- Jenny Delwood, Liberty Hill
- Clare Fox, LA Food Policy Council
- Cynthia Guzman, Estolano LeSar Advisors
- Heather June Northover, LA County Center for Health Equity
- Michele Prichard, Liberty Hill
- Ben Russak, Liberty Hill
- Madeline Wander, USC Program for Regional & Environmental Equity

**Breakout Group Scribes:** Communities for a Better Environment; Day One; East Yard  
Communities for EJ; Liberty Hill; SCOPE; UCLA

# Today's Agenda



- 10:10 **Welcome & Workshop Overview**
- 10:15 **Resilience Overview by Marissa Aho, LA Mayor's Office of Resilience**
- 10:25 **Equity Overview by Prof. Martha Matsuoka, UEPI, Occidental College**
- 10:35 **Morning Breakouts**
- 12:30 **Lunch**
- 1:00 **Afternoon Breakouts**
- 2:55 **Evaluation/Sticky Note Exchange**
- 3:00 **Closing Remarks: Chief Sustainability Office**
- 3:05 **Landscape Viewing and Dot Voting/Sticky Note Additions**
- 4:00 **Survey and Adjournment**

# Key Terms

## Vision

A core value or values at the heart of the plan – the “why”

## Goals

Broad, aspirational statement of what we want to achieve

## Strategies

Approach or approaches that we take to achieve a goal (strategies may support multiple goals)

## Actions

Specific policy, program, or tool we take to achieve a strategy

*PERFORMANCE MONITORING*

## Indicators

Quantitative measures used to assess performance on a regular basis

## Targets

Levels of performance that are sustainable

# Resilience Overview

## Marissa Aho



Our County

# Why Resilience?

Los Angeles



Florida



**Resilience** is the capacity to survive, adapt, and thrive in the face of chronic stresses and acute shocks, and to even transform as conditions require.

Northern California



Mexico City



Puerto Rico



Texas



Las Vegas



Carolinas



Indonesia



Hawaii



Central Coast

Risk is the interdependent consequences of **acute potential shocks** and **chronic underlying stresses**.

SHOCK



STRESS



EXPOSURE



VULNERABILITY



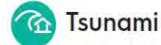
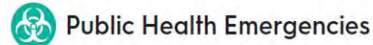
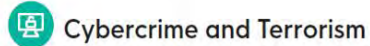
HAZARD

CONSEQUENCE

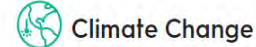


# Shocks and Stresses

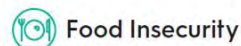
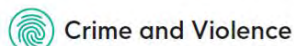
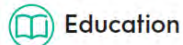
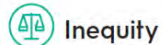
## Disaster Preparedness and Recovery



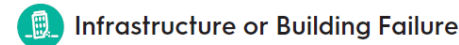
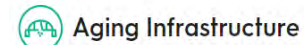
## Climate Adaptation

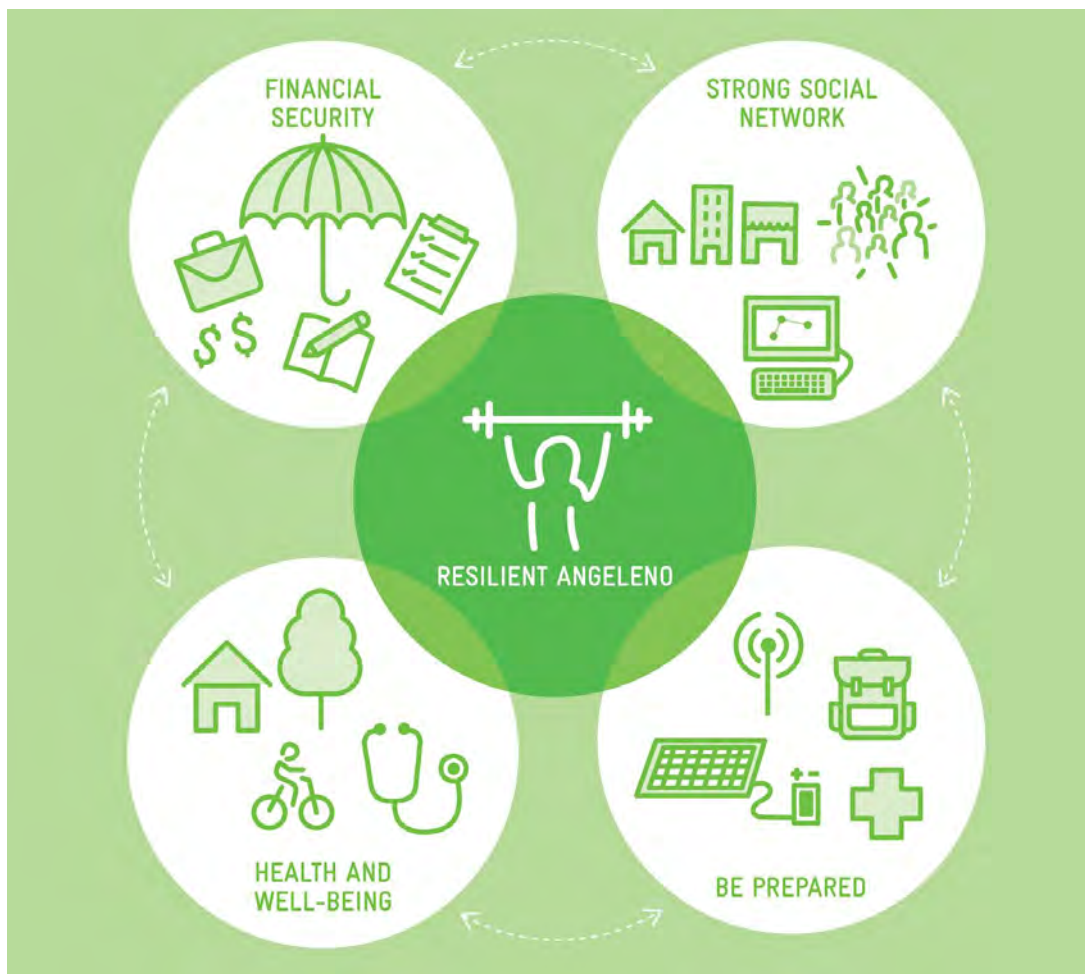


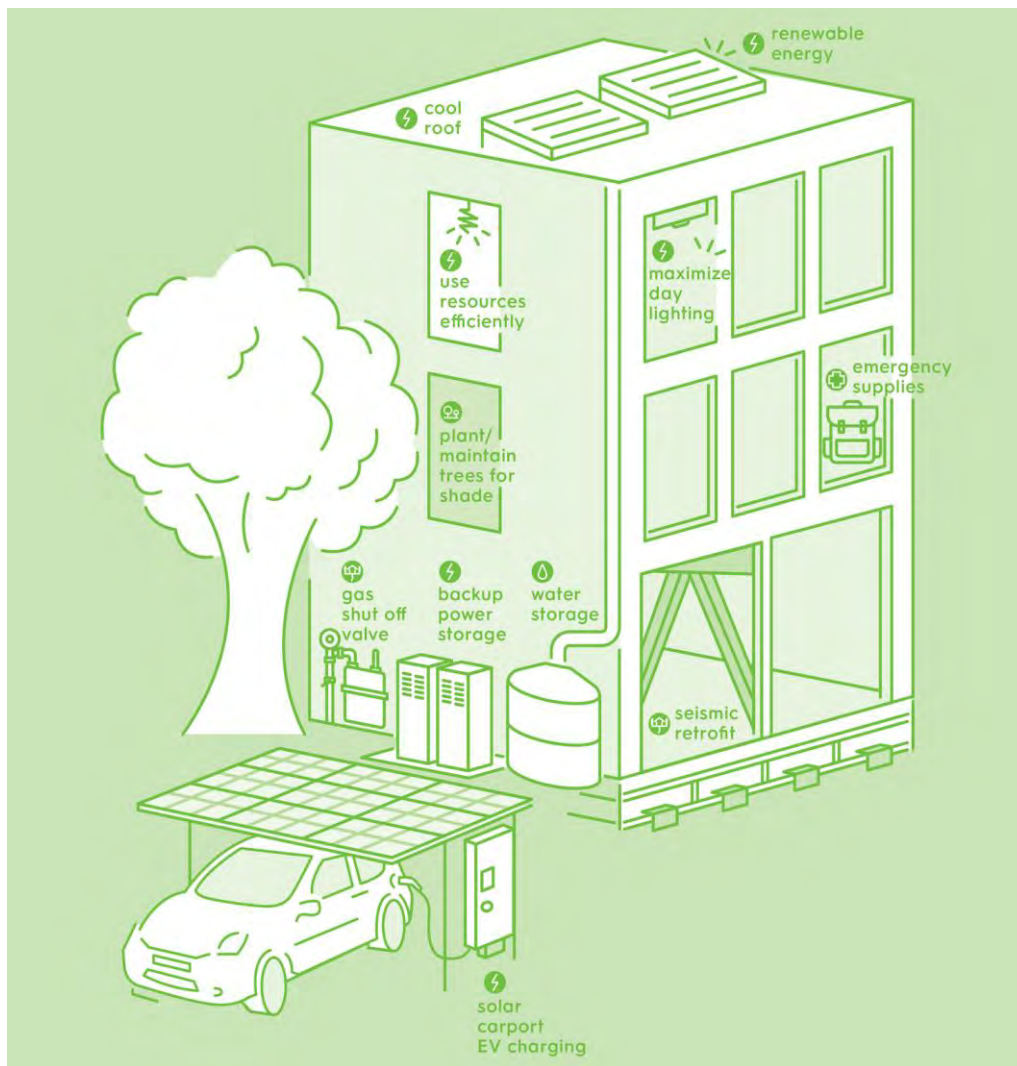
## Economic Security



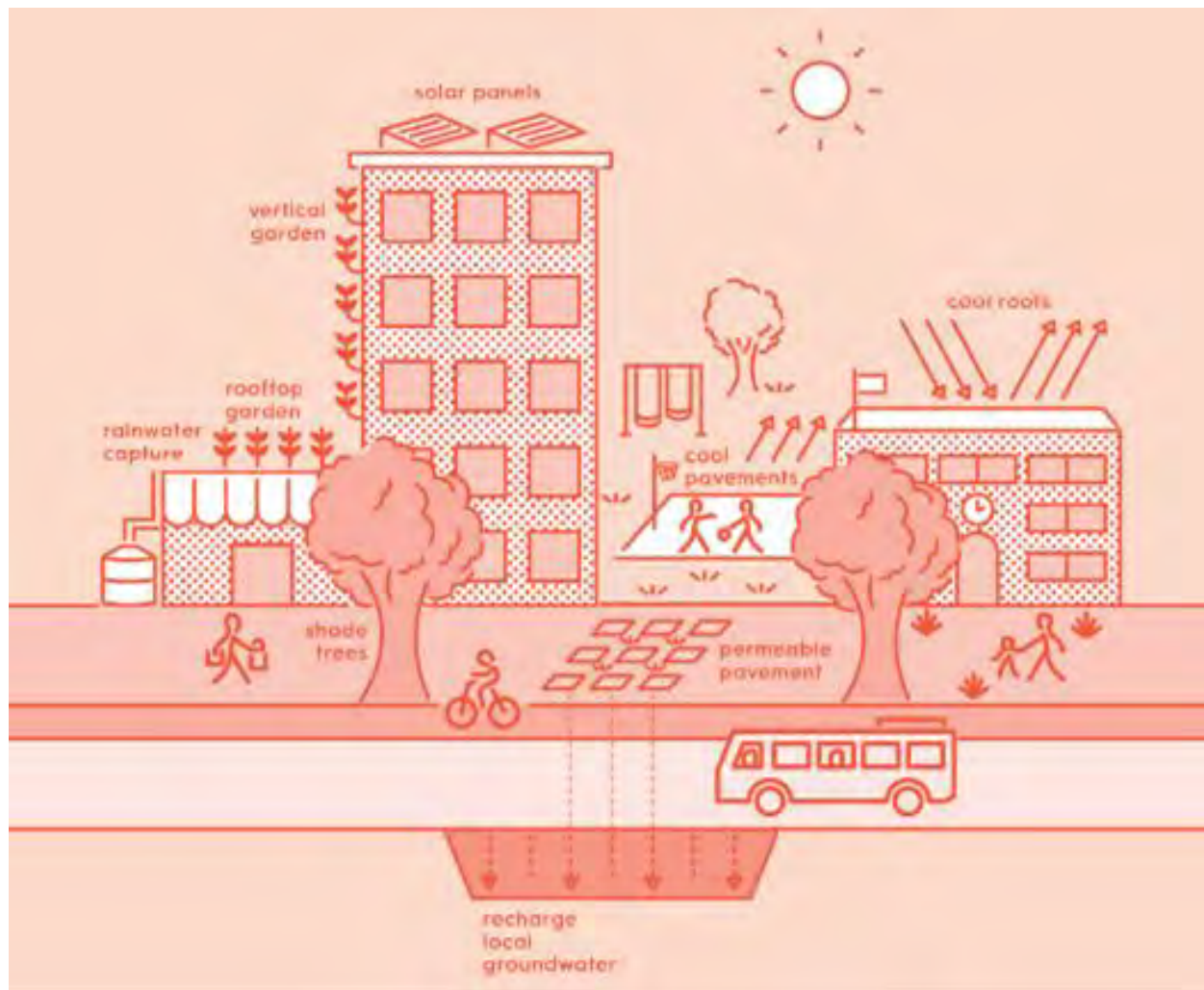
## Infrastructure Modernization



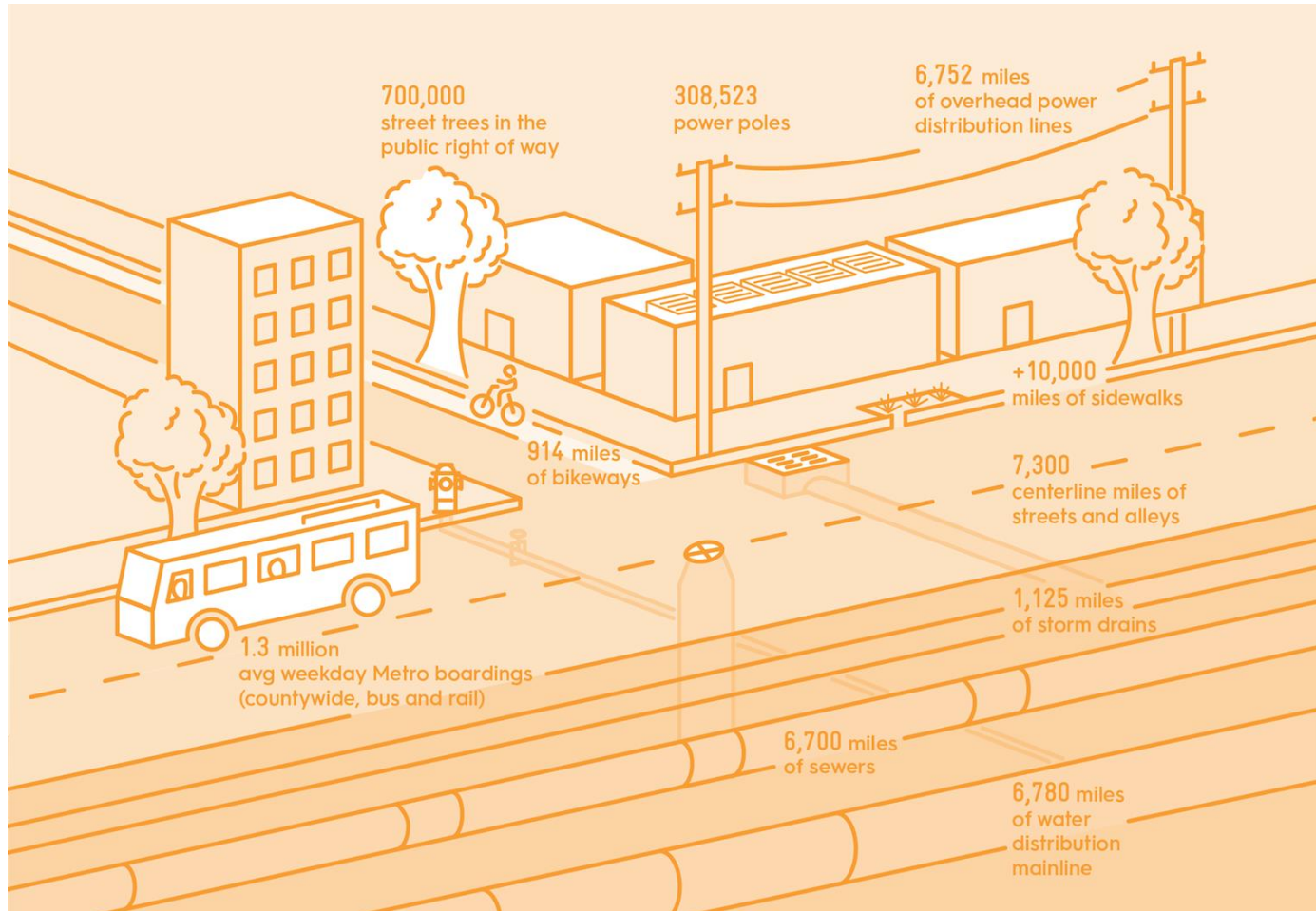
















# Equity Overview

## Prof. Martha Matsuoka



[OurCountyLA.org](https://OurCountyLA.org)