



Our County

Public Health and Air Quality: An 'Our County' Workshop

October 3, 2018

Stakeholder Process and Today's Agenda

Stakeholder Engagement Equity Statement



Equity

Goal

Reduce disparities across geographies due to race, class, gender, and other social differences

Strategy

Commit resources to include those often left out of policy and planning discussions

Indicators

Distributional	Actions that repair current and historical imbalances
Procedural	Participatory decisionmaking with vulnerable communities
Transformational	Strategies securing future benefits for at-risk populations

Stakeholder Engagement Plan



Stakeholder Engagement Timeline



Today's Team Leaders



Stakeholder Engagement

- UCLA: Laurel Hunt & Ari Simon
- Liberty Hill: Michele Prichard, Ben Russak & Chuy Flores
- Estolano LeSar Advisors: Cynthia Guzman

Data & Analysis and Topic Teams

- UCLA: Harjot Kaur
- BuroHappold: Chris Rhie
- Raimi + Associates: Monica Guerra
- GNA: Cliff Gladstein

Today's Agenda



9:10 **Welcome**

- Welcome (Laurel Hunt & Ari Simon, UCLA)
- CARB Welcome (Hector De La Torre)
- Introduction to Our County (Gary Gero, LA County Chief Sustainability Officer)
- Public Health Overview (Monica Guerra, Raimi + Associates)
- Nonprofit Workshop Summary (Michele Prichard, Liberty Hill Foundation)

9:45 **Breakout #1: Goals**

10:30 **Break**

10:40 **Breakout #2: Strategies**

12:05 **Breakout #3: Cross-sector Collaboration**

12:20 **Closing Remarks**

- Kristen Torres Pawling, LA County Chief Sustainability Office

12:30 **Survey and Adjournment**

Hector De La Torre

California Air Resources Board

The Team

Consultant Team



Topic and data collection and analysis leadership and stakeholder engagement co-leadership



Stakeholder engagement
co-leadership



Topic expert: open space



Topic expert: housing,
economy & workforce development



Topic expert:
health and wellbeing



Topic expert:
transportation



Topic expert:
air quality



Advisors

Los Angeles County Chief Sustainability Office

A wide-angle landscape photograph showing a vast valley. In the foreground, there are green fields with some orange wildflowers. In the middle ground, a large solar farm with rows of photovoltaic panels is visible. Further back, a field of wind turbines stands against a backdrop of rolling hills and mountains under a clear blue sky.

The Chief Sustainability Office provides comprehensive and coordinated policy support and guidance for the Board of Supervisors, County departments, the unincorporated areas, and the region to make our communities healthier, more liveable, economically stronger, more equitable, more resilient, and more sustainable.

The Plan

The County's Aims



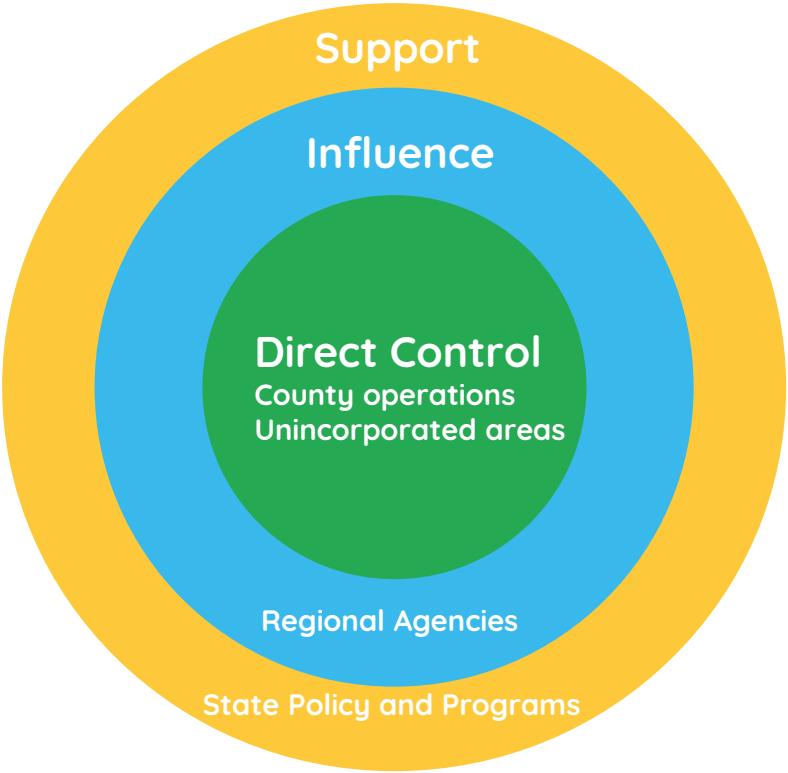
The plan should be:

- Aspirational, Comprehensive, Long-Term, Regional, Actionable

The task:

- Develop a comprehensive framework for County and City sustainability initiatives
- Serve as template for local cities when preparing sustainability/climate action plans
- Prepare the region to be competitive for funding

The County's Sphere of Influence



Countywide Sustainability Plan Framework



- Water
- Energy
- Climate
- Air Quality
- Land Use and Transportation
- Open Space, Recreation and Habitat/Biodiversity
- Resource Recovery and Waste Management
- Public Health and Well-Being
- Economy and Workforce Development
- Housing

**Equity &
Resilience
woven
throughout**

Organizing Principles



Nurturing Healthy Communities



Cultivating a Just Economy



Fostering a Healthy Relationship with the Environment



Making It Happen

Key Terms

Vision

A core value or values at the heart of the plan – the “why”

Goals

Broad, aspirational statement of what we want to achieve

Strategies

Approach or approaches that we take to achieve a goal (strategies may support multiple goals)

Actions

Specific policy, program, or tool we take to achieve a strategy

PERFORMANCE MONITORING

Indicators

Quantitative measures used to assess performance on a regular basis

Targets

Levels of performance that are sustainable

Key Terms

Vision

A core value or values at the heart of the plan – the “why”

Goals

Broad, aspirational statement of what we want to achieve

Strategies

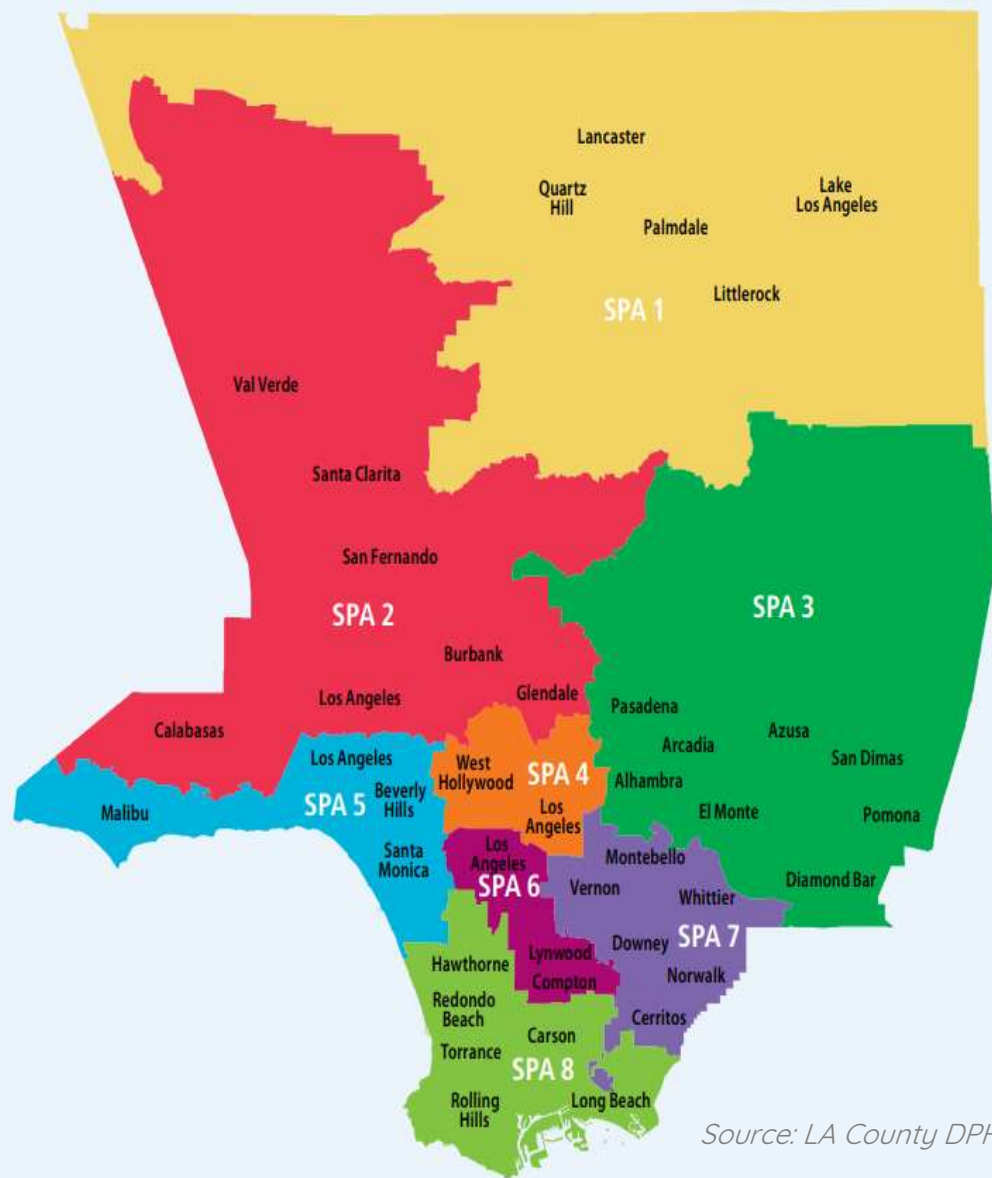
Approach or approaches that we take to achieve a goal (strategies may support multiple goals)

Today's Focus

LA County Public Health Overview

Key Findings

- Significant **racial and ethnic disparities** in health outcomes + determinants of health
- **Spatial inequalities** in health
- **Social determinants of health** influence health + wellbeing
- **Climate change** will be a risk amplifier



Source: LA County DPH

Health Outcomes

Average life expectancy:

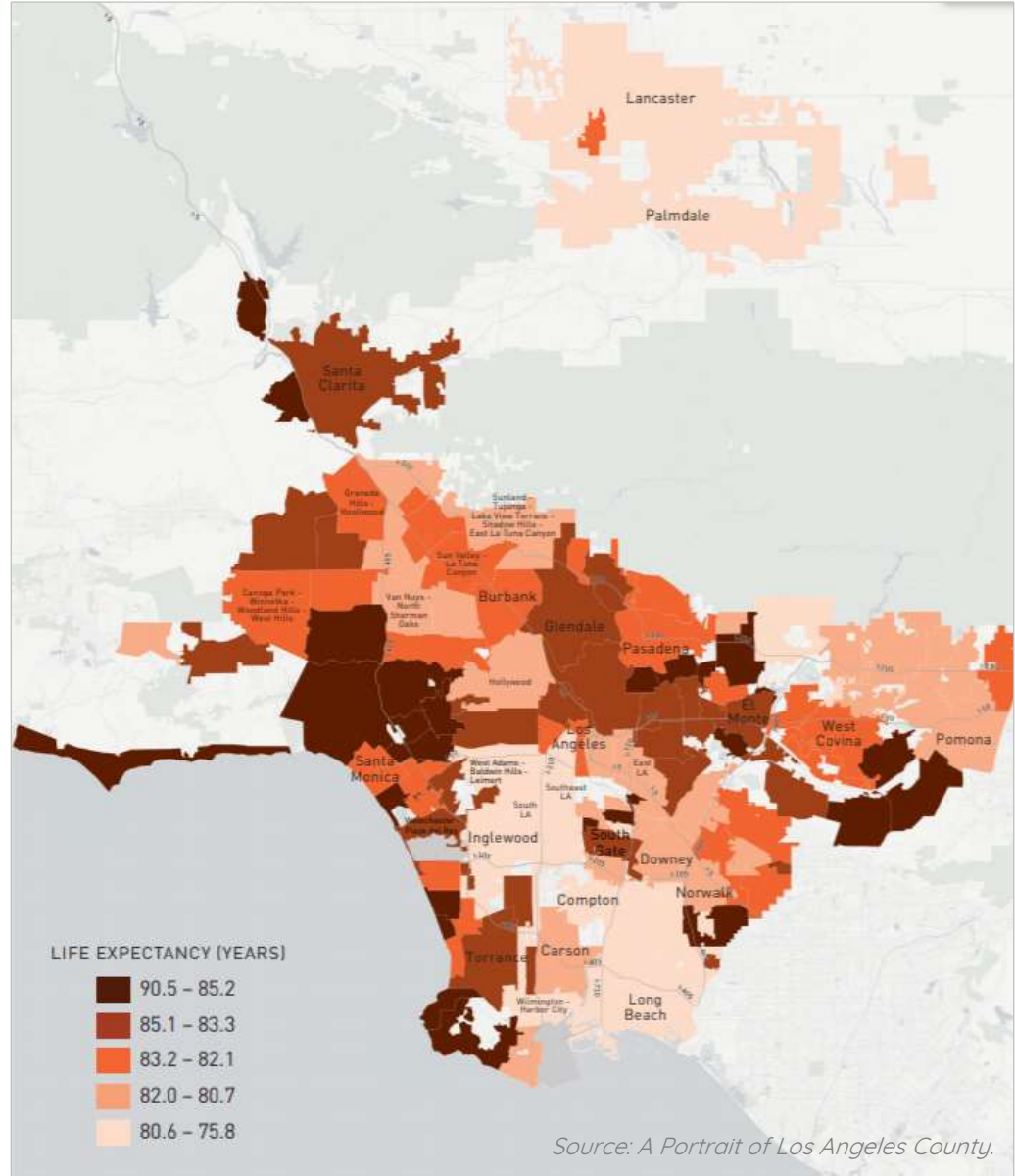
82.1 years

Highest life expectancy:

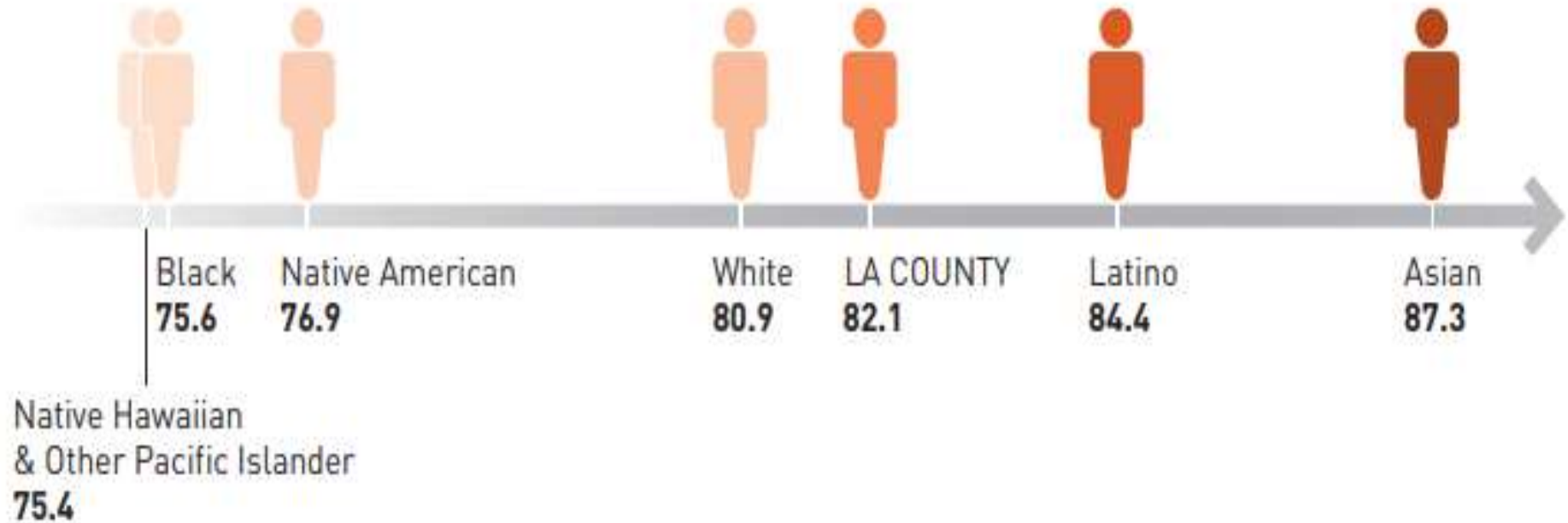
Malibu, Westwood, Bel-Air

Lowest life expectancy:

Lancaster, Lake Los Angeles, Sun Village



LIFE EXPECTANCY AT BIRTH (YEARS)



Source: *A Portrait of Los Angeles County, Measure of America*
of the Social Science Research Council.

Health and Wellbeing



Defined by:

- Physical health
- Social, mental, and emotional health
- Economic wellbeing



Source: LA County DPH

Social Determinants of Health



- Green spaces
- Sidewalks and bike paths
- Affordable housing



- Fresh produce stores
- High-quality schools
- Affordable health care
- Accessible public transportation



- Jobs with decent wages
- Work/life balance
- A diverse economy
- Affordable, safe childcare

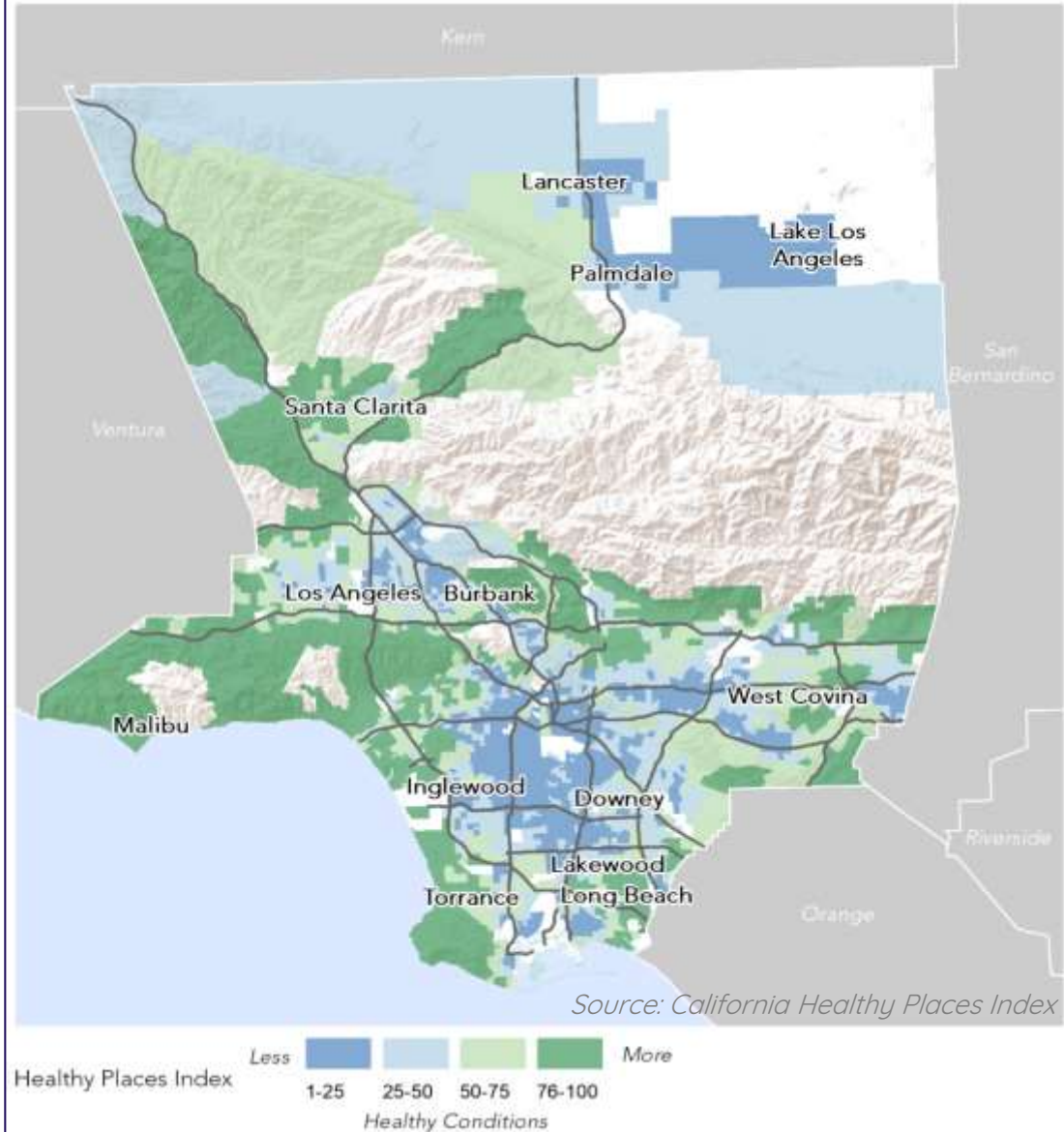


- Equality under the law
- Accountable government
- Safety and security

Source: *A Portrait of Los Angeles County. Measure of America of the Social Science Research Council.*

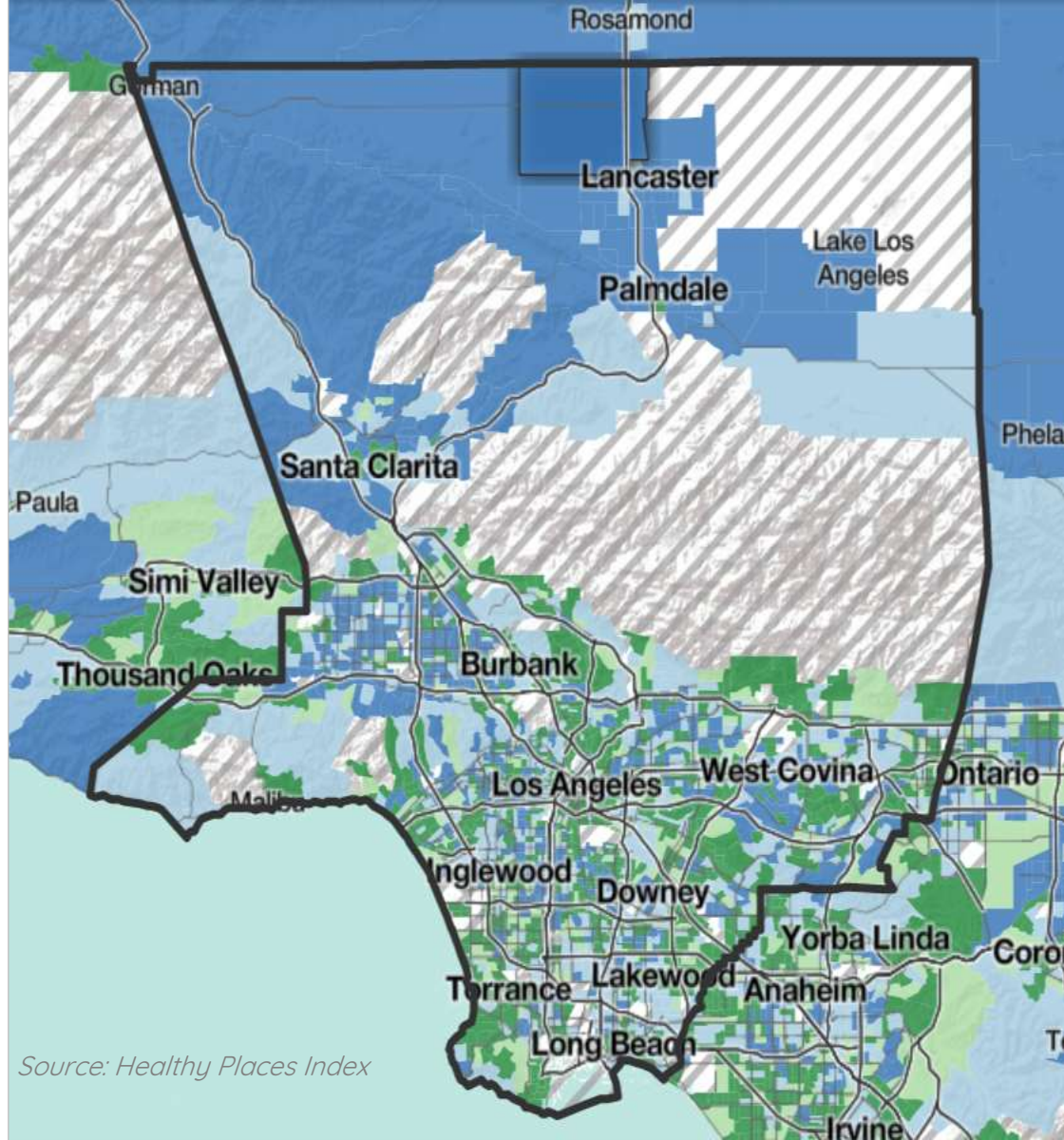
Healthy Places

Los Angeles County **ranks #23 in health outcomes**, based on how long people live and how healthy people while alive. In terms of **physical environment**, the County **ranks #57**.



Park Access

African Americans (56%) and Latinos (50%) are **more likely to reside in communities with less park space per capita** compared to Whites (27%) and Asians (36%).



Source: Healthy Places Index

Pollution Burden

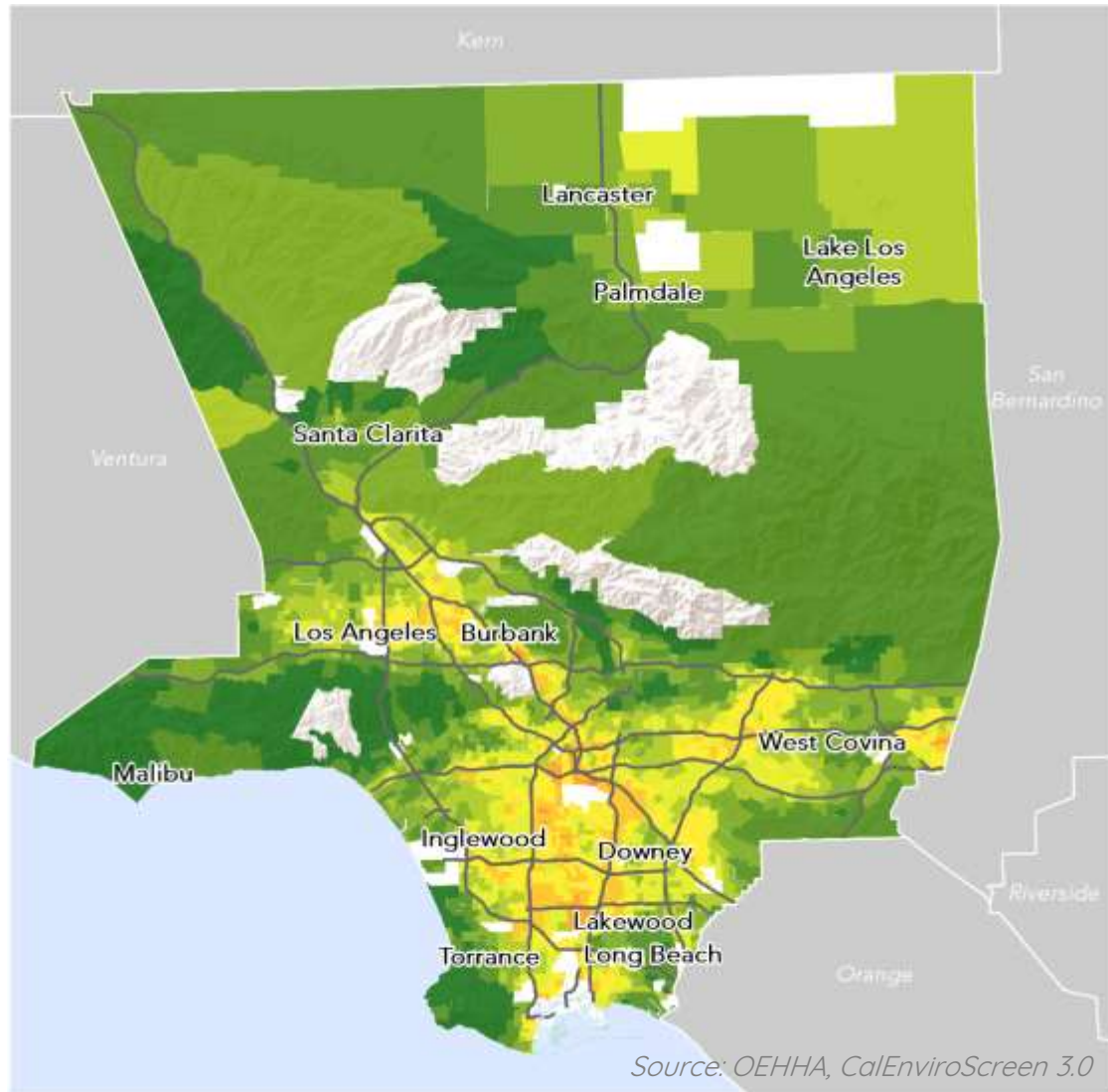
4,372,397 residents

of Los Angeles County live in a
disadvantaged community.



1 in 3

Latino and Black residents live in the most
highly-impacted communities statewide



Source: OEHHA, CalEnviroScreen 3.0

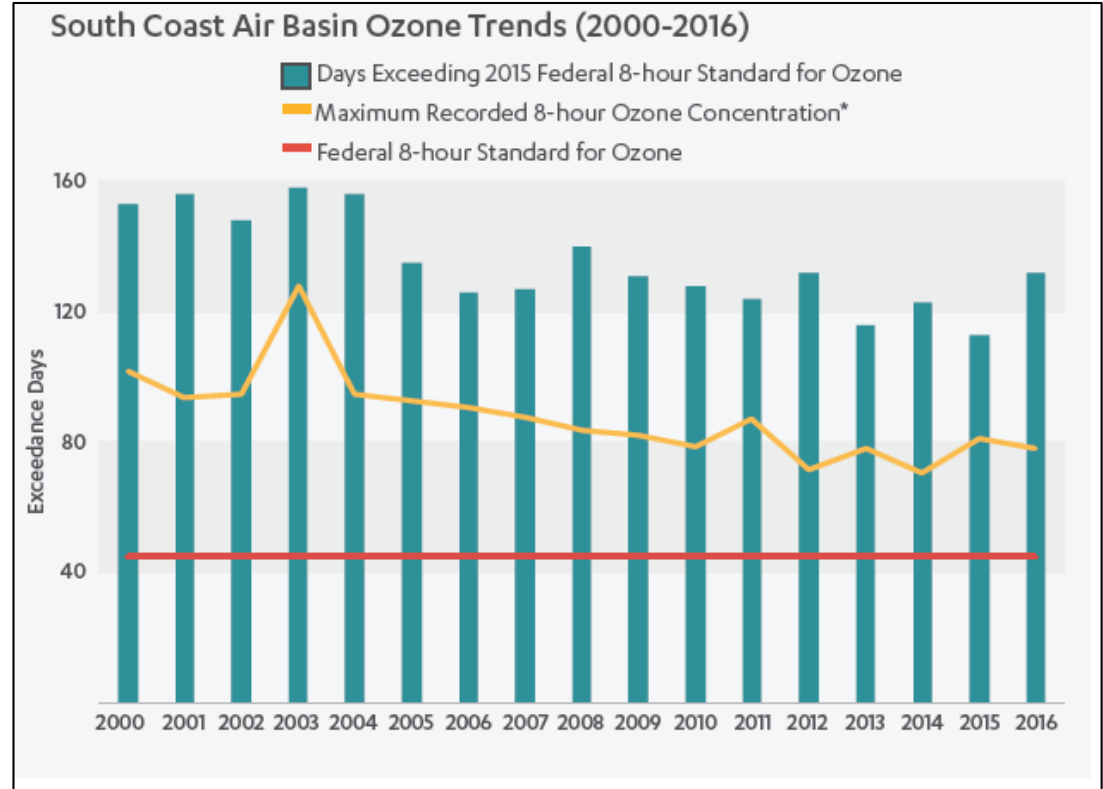
CalEnviroScreen 3.0
Percentile Score



Air Quality: Ozone Trends



- L.A. County has a high proportion of toxic emissions from the energy sector
- Ozone trends are consistently above the 8 hour standard for ozone; it varies geographically
- There have been major improvements in light-duty motor vehicles; heavy-duty vehicles have not seen the same kinds of improvements.

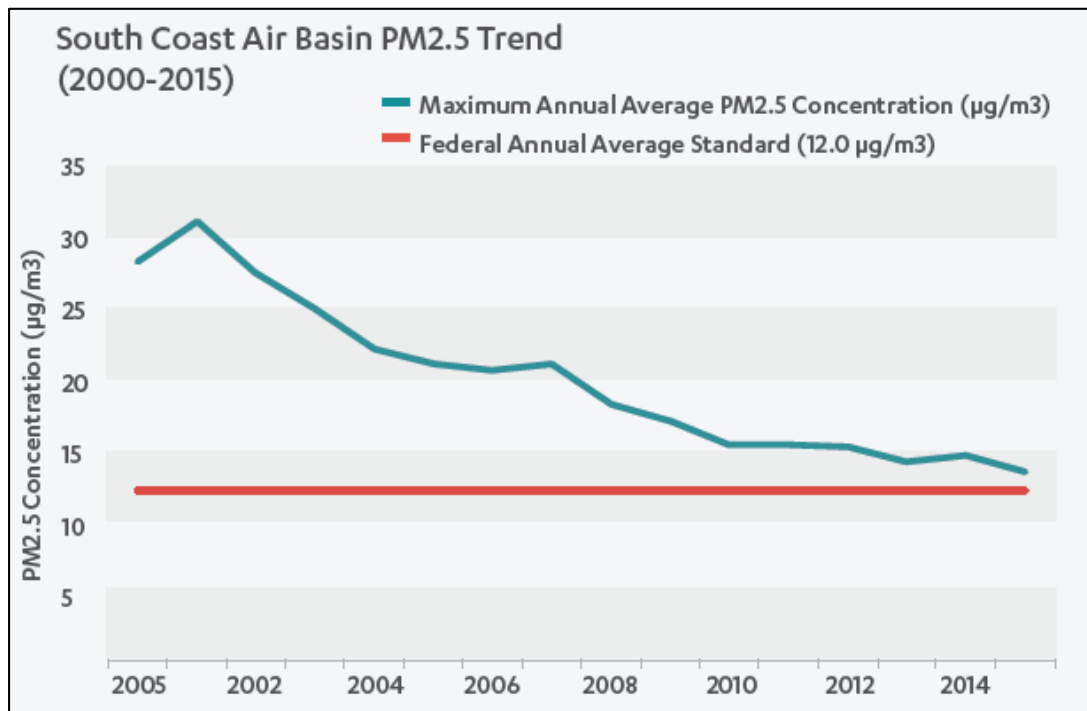


Federico, F., Rauser, C., & Gold, M. (2017). 2017 Sustainable LA Environmental Report Card for Los Angeles County: Energy & Air Quality

Air Quality: Particulate Matter Trend

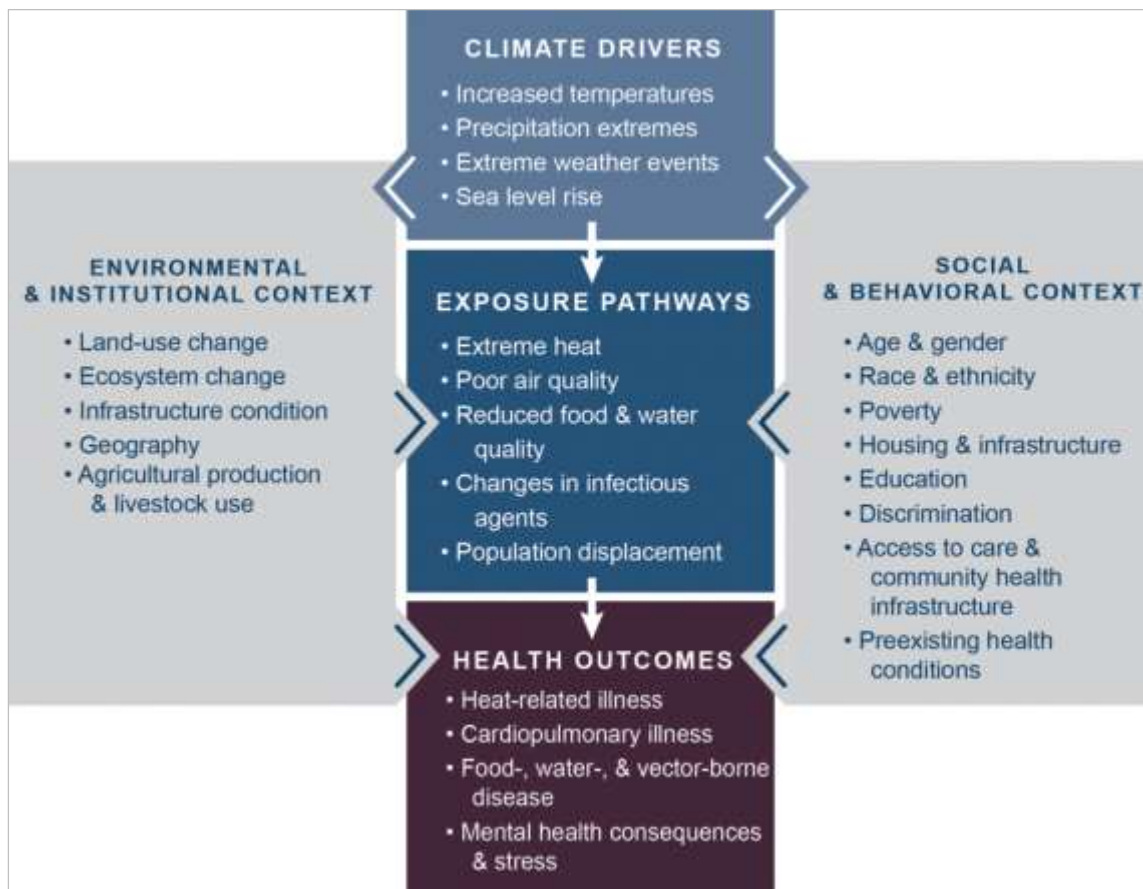


- In the South Coast Basin, PM 2.5 shows a downward trend, but exposure to particulate matters varies geographically
- Finer particles, such as PM2.5, can affect a person's lungs and heart, causing cardiovascular illnesses such as cardiac arrhythmias and heart attacks, and respiratory effects such as asthma attacks and bronchitis.



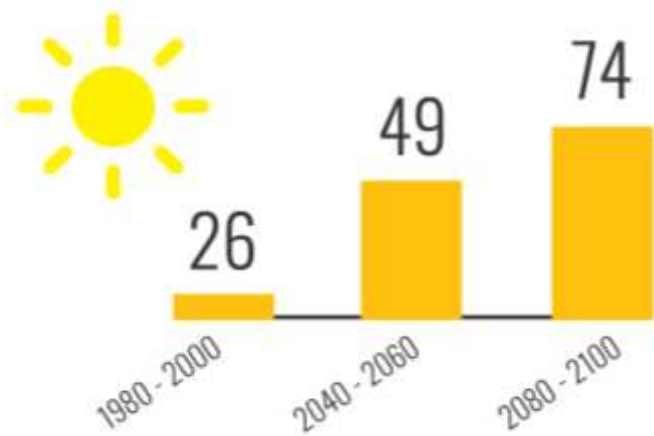
Federico, F., Rauser, C., & Gold, M. (2017). 2017 Sustainable LA Environmental Report Card for Los Angeles County: Energy & Air Quality

Climate Change and Health

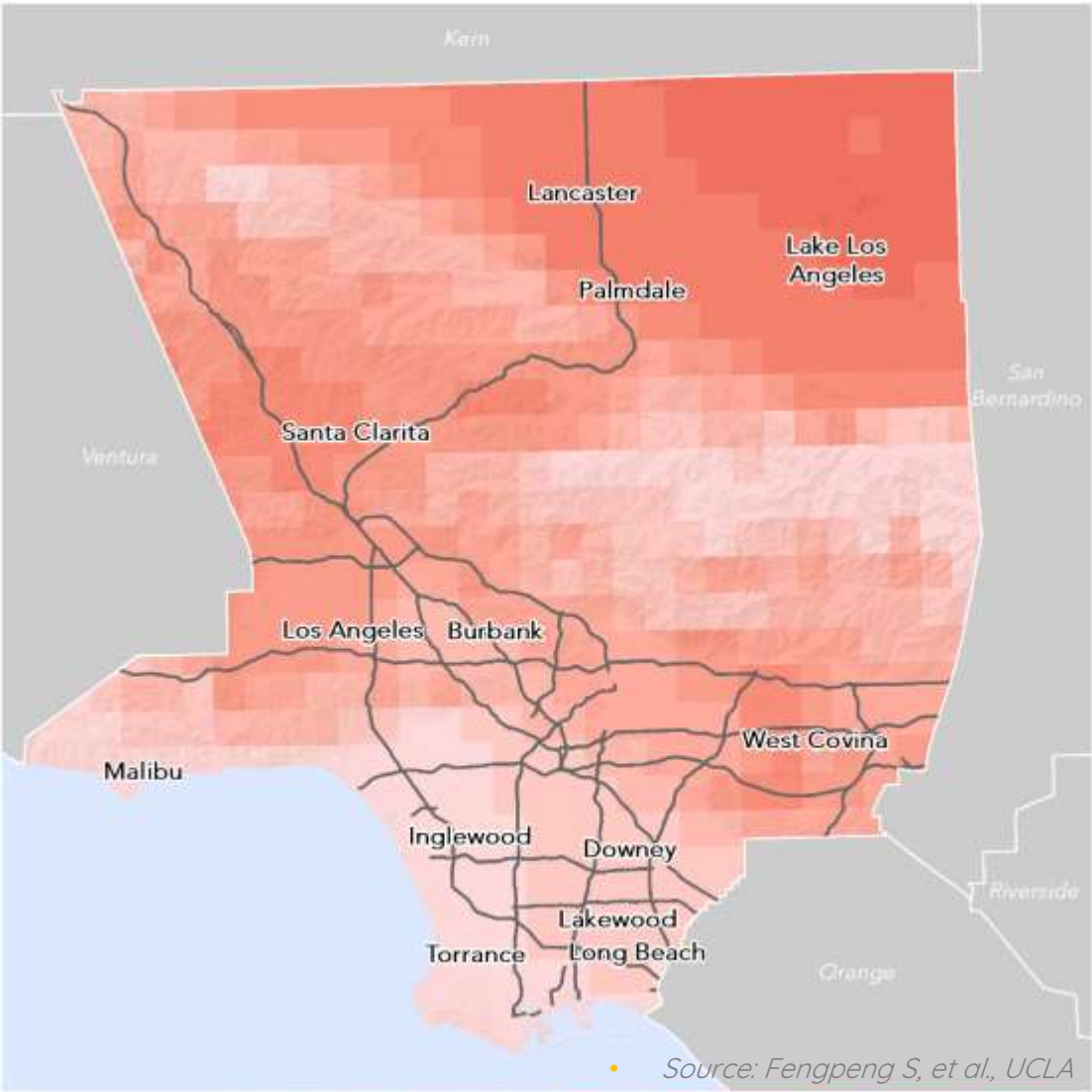


Extreme Heat Days

Change in Extreme Heat Days

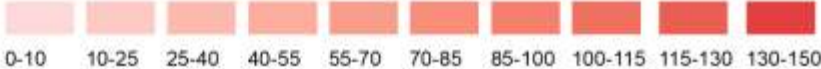


Average Across LA County



Source: Fengpeng S, et al, UCLA

Average Extreme Heat Days 2050 (Scenario 8.5)



Draft Goals for Discussion



- A. Eliminate racial disparities in health outcomes by supporting policies that advance equity.
- B. Improve collection, accessibility, and evaluation of public health data by adopting a racial equity lens.
- C. Improve community communication by developing a place-based climate change education partnership.
- D. Build a County that supports inclusion, health and wellbeing for all residents.
- E. Enhance health equity by addressing racial equity and environmental pollution.
- F. Accelerate the transition to sustainable alternatives to fossil fuel for transportation, manufacturing, and energy production.
- G. Improve access to educational and employment opportunities.

Nonprofit Workshop Feedback

Nonprofit Water Workshop

June 28, 2018 – The California Endowment



Nonprofit Energy Workshop July 13, 2018 - LATTC



Morning Small Group Discussions on Cross-cutting Issues



Afternoon Breakouts on Environment, Health, Economy, & Equity



Nonprofit Transportation Workshop

July 27, 2018 - LATTC

“Dot Democracy” Activity



Case Studies

LA County Case Studies



- Los Angeles County Food Redistribution Initiative (LACFRI)
- Green Zones
- Center for Health Equity
- Vision Zero
- Life is Better with Trees



[OurCountyLA.org](https://www.OurCountyLA.org)

[#OurCountyLA](https://twitter.com/OurCountyLA)



For California Clean Air Day, join
your fellow Californians to clear the
air by making your clean air pledge
at **cleanairday.org**

